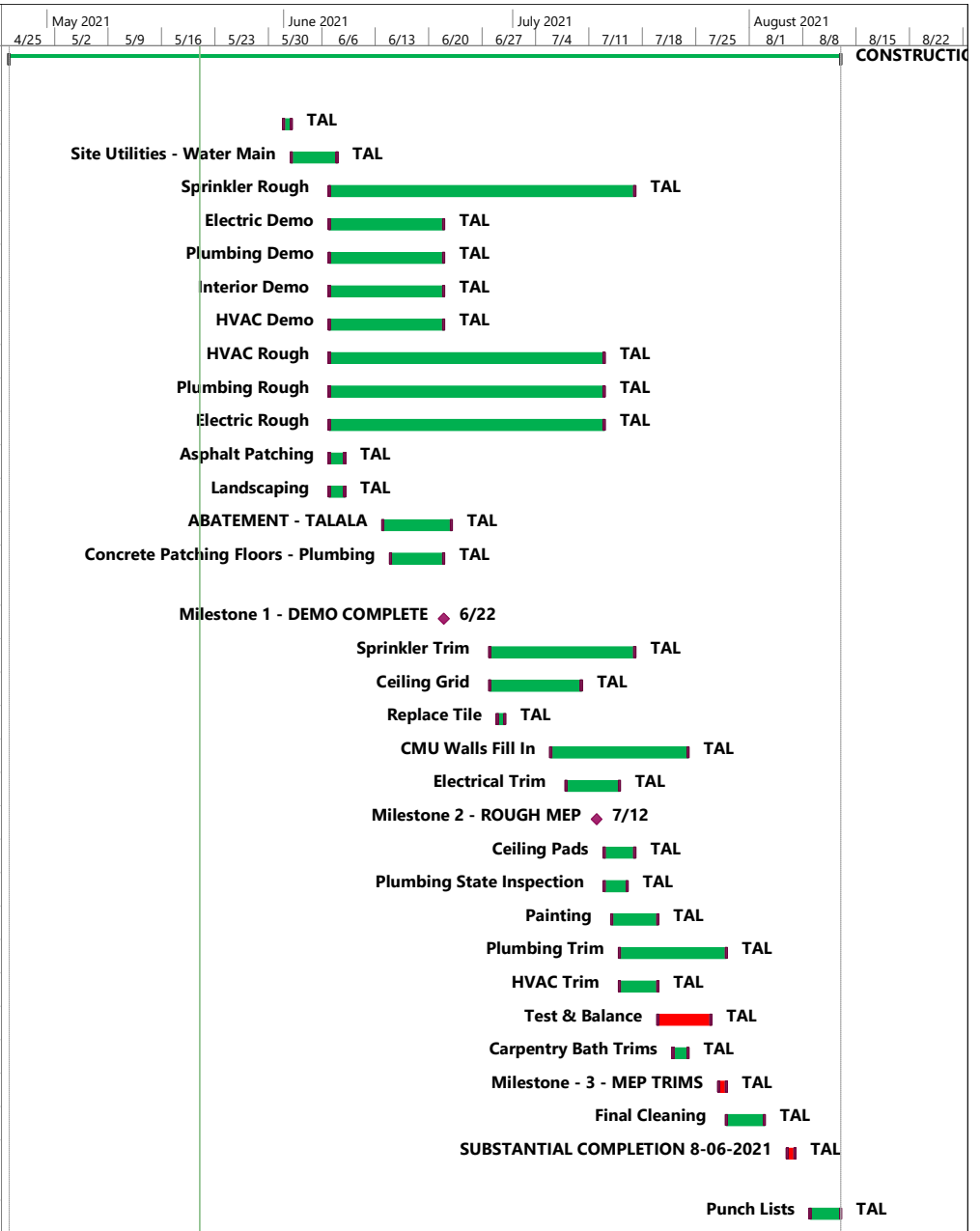


ID	Task Mode	Resource Names	Task Name	Duration	Start	Finish	May 2021					June 2021					July 2021					August 2021				
							4/25	5/2	5/9	5/16	5/23	5/30	6/6	6/13	6/20	6/27	7/4	7/11	7/18	7/25	8/1	8/8	8/15	8/22		
0			CONSTRUCTION SCHEDULE TALALA - ELC	80 days	Mon 4/26/21	Thu 8/12/21																				
72	★	TAL	START OF JOB - TALALA	1 day	Tue 6/1/21	Tue 6/1/21																				
36	★	TAL	Site Utilities - Water Main	5 days	Wed 6/2/21	Mon 6/7/21																				
31	★	TAL	Sprinkler Rough	30 days	Mon 6/7/21	Fri 7/16/21																				
32	★	TAL	Electric Demo	11 days	Mon 6/7/21	Mon 6/21/21																				
33	★	TAL	Plumbing Demo	11 days	Mon 6/7/21	Mon 6/21/21																				
34	★	TAL	Interior Demo	11 days	Mon 6/7/21	Mon 6/21/21																				
35	★	TAL	HVAC Demo	11 days	Mon 6/7/21	Mon 6/21/21																				
37	★	TAL	HVAC Rough	26 days	Mon 6/7/21	Mon 7/12/21																				
38	★	TAL	Plumbing Rough	26 days	Mon 6/7/21	Mon 7/12/21																				
39	★	TAL	Electric Rough	26 days	Mon 6/7/21	Mon 7/12/21																				
57	★	TAL	Asphalt Patching	2 days	Mon 6/7/21	Tue 6/8/21																				
58	★	TAL	Landscaping	2 days	Mon 6/7/21	Tue 6/8/21																				
30	★	TAL	ABATEMENT - TALALA	7 days	Mon 6/14/21	Tue 6/22/21																				
40	★	TAL	Concrete Patching Floors - Plumbing	5 days	Tue 6/15/21	Mon 6/21/21																				
60	★	TAL	Milestone 1 - DEMO COMPLETE	0 days	Tue 6/22/21	Tue 6/22/21																				
43	★	TAL	Sprinkler Trim	15 days	Mon 6/28/21	Fri 7/16/21																				
49	★	TAL	Ceiling Grid	10 days	Mon 6/28/21	Fri 7/9/21																				
53	★	TAL	Replace Tile	1 day	Tue 6/29/21	Tue 6/29/21																				
41	★	TAL	CMU Walls Fill In	14 days	Tue 7/6/21	Fri 7/23/21																				
42	★	TAL	Electrical Trim	5 days	Thu 7/8/21	Wed 7/14/21																				
66	★	TAL	Milestone 2 - ROUGH MEP	0 days	Mon 7/12/21	Mon 7/12/21																				
52	★	TAL	Ceiling Pads	4 days	Tue 7/13/21	Fri 7/16/21																				
65	★	TAL	Plumbing State Inspection	3 days	Tue 7/13/21	Thu 7/15/21																				
45	★	TAL	Painting	4 days	Wed 7/14/21	Mon 7/19/21																				
44	★	TAL	Plumbing Trim	10 days	Thu 7/15/21	Wed 7/28/21																				
51	★	TAL	HVAC Trim	3 days	Thu 7/15/21	Mon 7/19/21																				
62	★	TAL	Test & Balance	5 days	Tue 7/20/21	Mon 7/26/21																				
68	★	TAL	Carpentry Bath Trims	2 days	Thu 7/22/21	Fri 7/23/21																				
74	★	TAL	Milestone - 3 - MEP TRIMS	1 day	Wed 7/28/21	Wed 7/28/21																				
50	★	TAL	Final Cleaning	3 days	Thu 7/29/21	Mon 8/2/21																				
46	★	TAL	SUBSTANTIAL COMPLETION 8-06-2021	1 day	Fri 8/6/21	Fri 8/6/21																				
47	★	TAL	Punch Lists	4 days	Mon 8/9/21	Thu 8/12/21																				



Project: CONSTRUCTION SCHE Date: Fri 5/21/21	Task		Project Summary		Manual Task		Start-only		Deadline	
	Split		Inactive Task		Duration-only		Finish-only		Progress	
	Milestone		Inactive Milestone		Manual Summary Rollup		External Tasks		Manual Progress	
	Summary		Inactive Summary		Manual Summary		External Milestone			